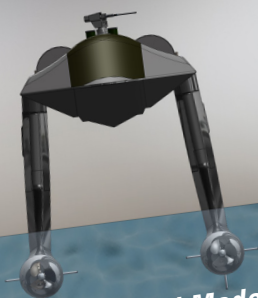
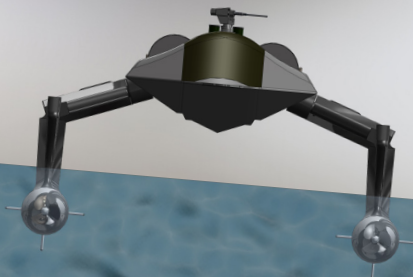


SENTRY: Reconfigurable USV SWATH

Patents Pending



High Speed Mode



Stability Mode



Low Visibility Mode



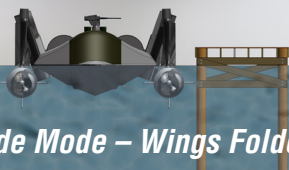
Normal Run Mode

JULIETMARINE
SYSTEMS, INC.

Technical Innovations for the Preservation of Freedom

• 62 Deer Street Portsmouth, NH 03801 •
www.julietmarine.com Tel. 603.319.8412

SENTRY: **Highly Stable, Cost Effective Mission Platform**



Dockside Mode – Wings Folded

SENTRY USV Specifications

Top Speed: 35 - 40 knots

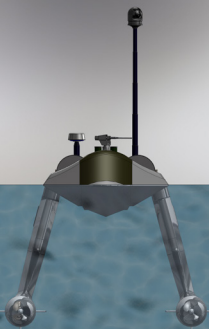
Range: 1070 nm at 15 knots

Payload: 3,000 - 5,000 pounds

Operational Sea States: Up to sea state 4

Loiter Time: 30+ days

This unique, reconfigurable and highly stable unmanned vessel is designed to have extremely low visual and radar signatures while offering extended mission duration.

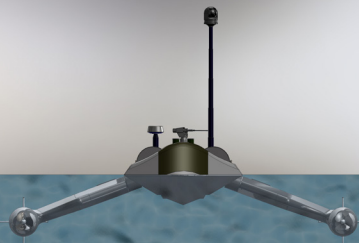


Low Visibility Mode with ISR Mast

- Remains Operational in High Sea States
- Improved Tactical Capabilities
- Transportable - 10T crane, Road Trailer, C-17 Airframe
- Reduced Radar and Visual Signatures
- Diesel Electric & Hybrid Power
- Advanced Stability
- Multi-mission Capable: ISR, Patrol, Sensor Towing
- Easy to Use and Low Cost
- Improved Life Cycle of Craft and Subsystems



Stable Run Mode



Wide Stance for Stability